

Helping under-resourced institutions increase NIH funding success and build research capacity.

SuRE  
Resource  
Center

GRANTSMANSHIP

# Training, Guidance & Expertise

## OVERVIEW

**The Challenge:** Institutions that teach students from backgrounds underrepresented in science often lack the resources to build a research environment on their campuses. As a result, the ability to support faculty research and provide racially diverse and low-income students access to biomedical careers becomes challenging.

**The Solution:** The National Institutes of Health (NIH) designed the **SuRE program** to help qualifying institutions on their path toward building and sustaining a research infrastructure. In partnership, the **SuRE Resource Center** provides free training, guidance, and expertise to help bridge the gap in taking those initial steps.

## HOW WE HELP

Webinar  
Training

Monthly trainings for faculty and Office of Sponsored Projects staff

Bootcamp  
Training

Online event prior to SuRE application deadlines

Biennial  
Conference

Networking for national SuRE community

Consulting

Personal instruction from research experts

OSP  
Seed Grant

Competitive funding to grow Office of Sponsored Projects (OSP)

On-Demand  
Resources

Recorded training videos and downloadable content

## WHO WE SUPPORT



### FACULTY

Reduce the Learning Curve in Funding Your Research



### RESEARCH ADMIN

Build an Environment That Supports Faculty Research



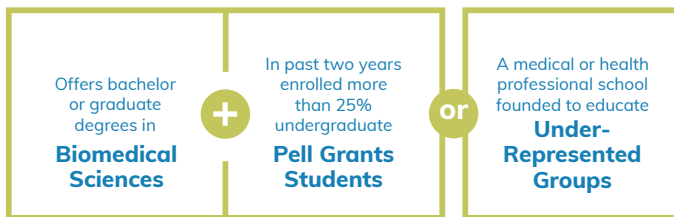
### LEADERSHIP

Obtain NIH Research Grants & Recruit Promising Students

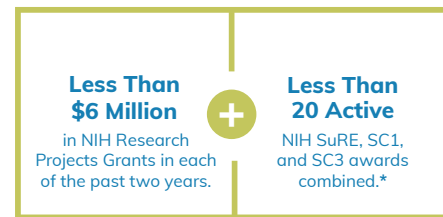
## ELIGIBILITY

The NIH SuRE program is designed for institutions that meet specific institutional and funding criteria. These include awarding bachelor or graduate degrees in biomedical and behavioral sciences, enrolling significant numbers of students from backgrounds nationally underrepresented in biomedical research, and receiving limited NIH Research Project Grant funding. For questions about eligibility, visit our [FAQ page](#) or request a Regional Coordinator below.

### 1. Institutional Criteria



### 2. Funding Criteria



\* Does not apply to SuRE-First

## R16 FUNDING MECHANISMS

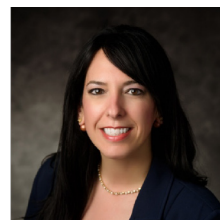


**SuRE** is for tenure-track (or equivalent) faculty with prior research experience not currently funded by an NIH RPG grant, with the exception of SCORE or SuRE grants. Those eligible for SuRE-First who do not want to commit six calendar months of effort may also apply.

**SuRE-First** is for tenure-track (or equivalent) faculty without experience leading externally-funded, independent research.

## REGIONAL COORDINATORS

Whether you're new to SuRE or familiar with the program and looking for advice, please feel free to contact one of our Regional Coordinators. They are here to answer your questions, provide guidance, and help you connect with the SuRE Resource Center team.



### WEST

Analia Loria, PhD  
University of Kentucky



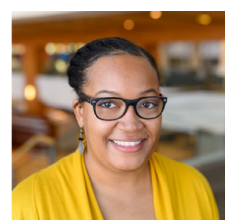
### CENTRAL

Esther Dupont-Versteegden, PhD  
University of Kentucky



### EAST

Martha Peterson, PhD  
University of Kentucky



### SOUTH

Brittany Rice, PhD  
University of Kentucky

[Request a Coordinator](#)

10.16.24

## CONTACT US

Visit our website



Melissa Nickell  
Program Administrator  
SuRE.RC@uky.edu